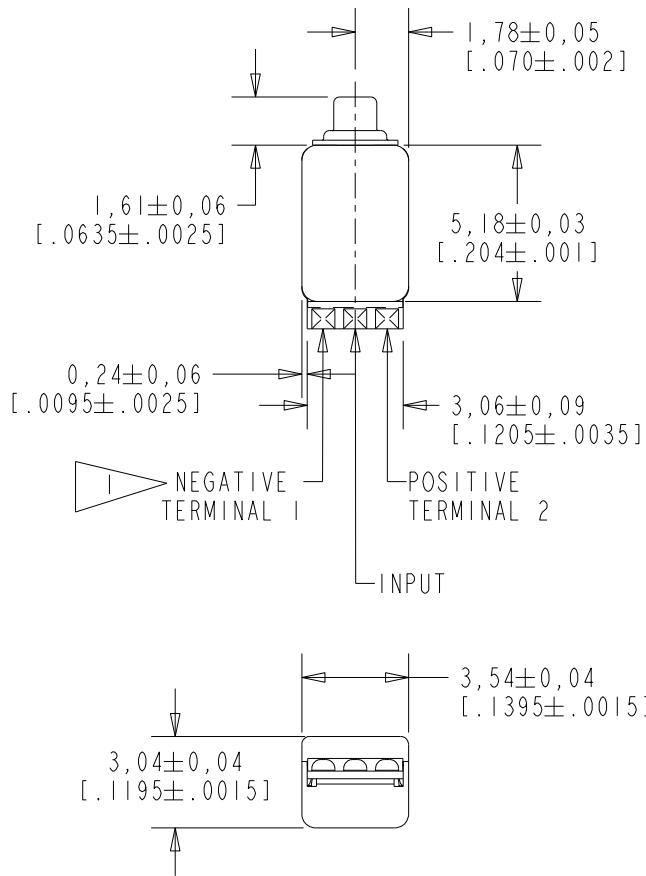
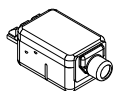
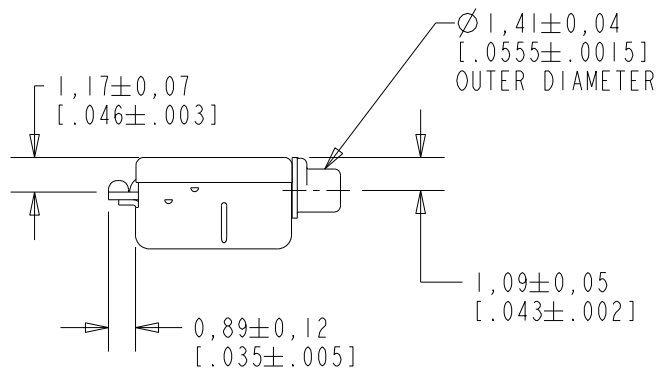


ES-23126-000

SHT 1.1



NOTE:
A POSITIVE GOING VOLTAGE AT THE INPUT TERMINAL CAUSES A DECREASE IN PRESSURE AT THE SOUND OUTLET.

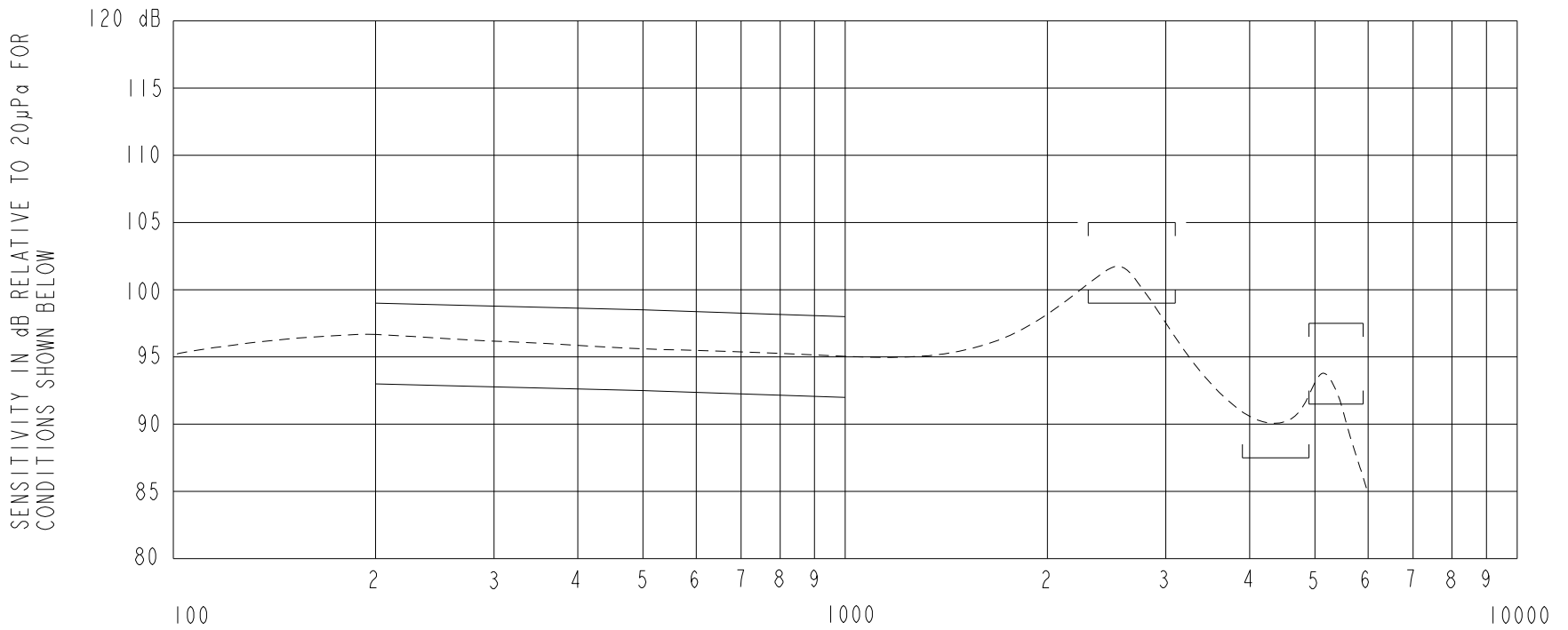


SCALE 2:1
NOMINAL WEIGHT .23 GRAMS
DIMENSIONS IN MILLIMETERS [INCHES]

KNOWLES CORPORATION

Revision	C.O. #	Implementation Date	RELEASE LEVEL	REVISION
C	PI0001062	12-19-16	Active	C
B	CI0114036	11-12-12		
A	CI0103570	12-28-05		

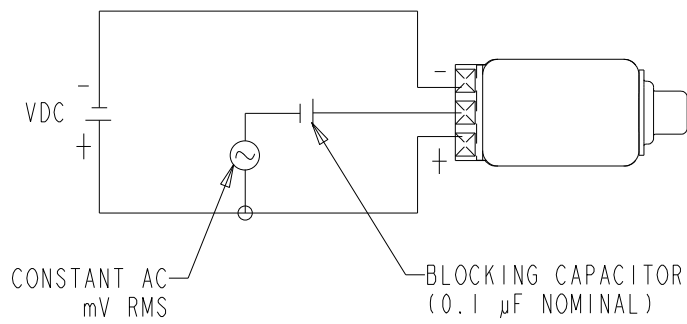
SCALE: 4:1		DR. BY: AB	DATE: 12-28-05
DO NOT SCALE DRAWING			
TITLE: RECEIVER	ES-23126-000	GJP	1-2-06
OUTLINE DRAWING	SHT 1.1	GJP	1-2-06



NOTES:

FREQUENCY IN HERTZ

- MEASUREMENTS MADE USING 10mm (.394") OF 1mm (.039") ID TUBE CONNECTED TO A SIMULATED ANSI S3.7 TYPE HA-3 COUPLER. (IEC 60318-5)
- ELECTRICAL SIGNAL (SEE #5 BELOW).



3.

SENSITIVITY

FREQUENCY	MIN.	MAX.
200	93.0	99.0
500	92.5	98.5
1000	92.0	98.0
2300-3100	99.0	105.0
3900-4900	87.5	---
4900-5900	91.5	97.5

4. RESPONSE AND DISTORTION MEASUREMENTS MADE USING THE ELECTRICAL TEST CONDITIONS SHOWN BELOW.

5. INDIVIDUAL SPECIFICATIONS.

PORT LOCATION	MAX. DC SUPPLY CURRENT, mA		DISTORTION		ELECTRICAL TEST CONDITIONS	
	VDC= 1.3	VDC= 1.5	MAX. %	FREQ Hz	CONSTANT AC mV RMS	VDC
12C	0.20	0.30	5	800	25	1.3

Revision	C.O. #	Implementation Date	RELEASE LEVEL	REVISION
C	PI0001062	12-19-16	Active	C
B	CI0114036	11-12-12		
A	CI0103570	12-28-05		

KNOWLES CORPORATION

WHEN TEST LIMITS ARE USED TO ESTABLISH INCOMING INSPECTION ACCEPTANCE/REJECTION CRITERIA, CORRELATION OF TEST EQUIPMENT WITH KNOWLES IS ALSO REQUIRED FOR ELIMINATION OF EQUIPMENT AND TEST METHOD VARIATION

TITLE: RECEIVER
PERFORMANCE SPECIFICATION

ES-23126-000
SHT 2.1

DR. BY	DATE
AB	12-28-05
CK. BY	DATE
GJP	1-2-06
APP. BY	DATE
GJP	1-2-06